

**LEWIS KATZ SCHOOL OF MEDICINE AND COLLEGE OF ENGINEERING
AT TEMPLE UNIVERSITY PRESENT:**

Building the Bridge 2021

**Saturday, March 13th
10:00 AM – 12:30 PM**

2nd LKSOM/COE

**Virtual Mini-Symposium
to Explore, Expand & Build
Collaborative Research**

**[https://temple.zoom.us/j/
92081303302](https://temple.zoom.us/j/92081303302)**

Topics & Featured Speakers

Acousto-Bioelectronics for Brain
Albert Kim, PhD

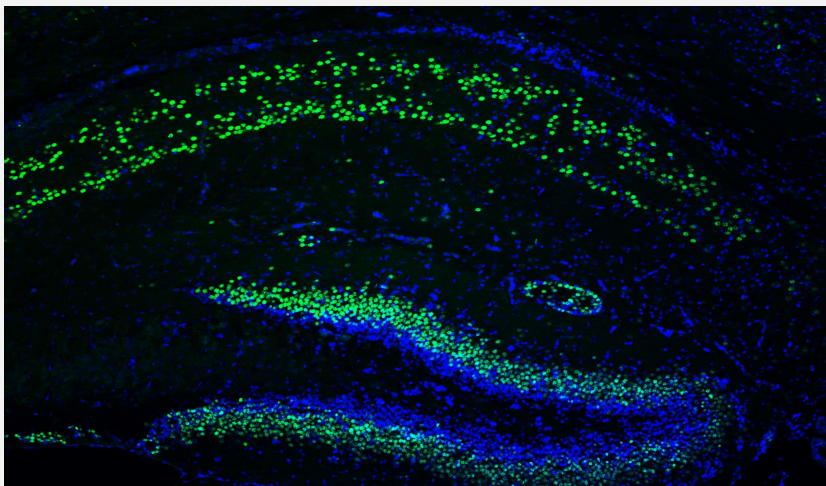
**Machine learning in Signal &
Image Processing**
Iyad Obeid, PhD, PhD

**Recovery from spinal cord injury:
genetics and kinematics**
Andrew Spence, PhD

**Axonal sprouting, regeneration
& seizure activity**
Thomas Campion, BS

**Improving Tuberous Sclerosis
Complex-Related Brain Alterations**
Bethany Terry, PhD Candidate

**Cerebrovascular dysfunction in
Alzheimer's disease: mechanisms
& therapeutic strategies**
Silvia Fossati, PhD



Building the Bridge

March 13, 2021

2nd LKSOM & COE Mini-Symposium to Explore, Expand & Build Collaborative Research

10:00-10:10

Welcoming remarks

John Daly, MD, Dean LKSOM

Keya Sadeghipour, PhD, Dean, College of Engineering

Introductions

Dianne Langford, PhD, Associate Dean, Research LKSOM

Peter Lelkes, PhD, Professor & Chair, Department of Bioengineering

10:10-10:30

Acousto-Bioelectronics for Brain

Albert Kim, PhD

Assistant Professor, Electrical and Computer Engineering

10:30-10:50

Machine learning in Signal & Image Processing

Iyad Obeid, PhD

Associate Professor, Electrical and Computer Engineering

10:50-11:10

Recovery from spinal cord injury: genetics and kinematics

Andrew Spence, PhD,

Associate Professor, Department of Bioengineering

11:10-11:30

Axonal sprouting, regeneration & seizure activity

Thomas Campion, BS

PI: George Smith, Shriners Hospitals Pediatric Research Center

11:30-11:50

Improving Tuberosus Sclerosis Complex-Related Brain Alterations

Bethany Terry, PhD candidate

PI: Seonhee Kim, Shriners Hospitals Pediatric Research Center

11:50-12:10

Cerebrovascular dysfunction in Alzheimer's disease: mechanisms & therapeutic strategies

Silvia Fossati, PhD

Associate Professor, Alzheimer's Center at Temple University

12:10 – 12:30

Discussion